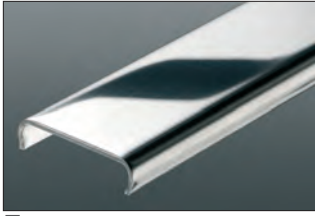
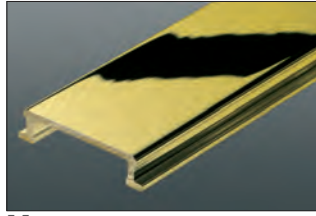


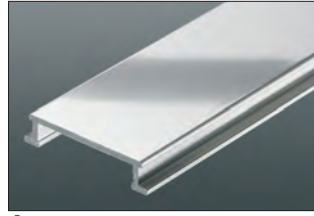
Available Finishes (Anchoring Leg)



E Stainless steel 304 (1.4301=V2A)
High-grade stainless steel 316 L
(1.4404=V4A)



M Solid brass



A Aluminum

Available Colors (Movement Zone)



HB
Light beige
Ral N/A



G
Grey
Ral 7030



GS
Black
Ral 9011